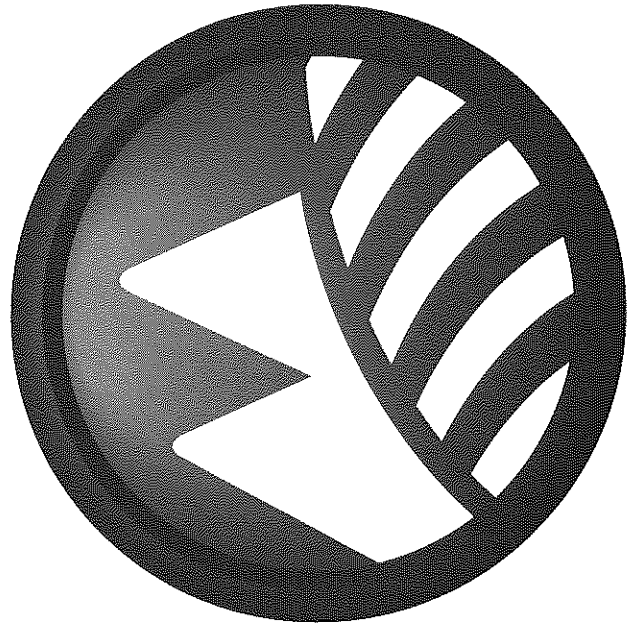


XPLORNET

East Hawkesbury

February 2020



XplorNet Communications Inc.

Steve Van Groningen, Manager, Corporate Affairs
steve.vangroningen@corp.xplornet.com
613-816-7149

Xplornet: Canada's Largest Rural-focused Service Provider

Our mission:

*We make **fast, affordable and reliable** broadband available to every rural Canadian home and business*

How we do it:

*We have built our **own national network**, using a mixture of fibre, fixed wireless and satellite technologies to extend service to all regions of Canada*



● Represents location of Xplornet subscribers

Today, we serve over **140,000 rural Ontario homes**, representing almost **350,000 Ontarians**
Expected to hit **400,000 Canadian homes in 2020**

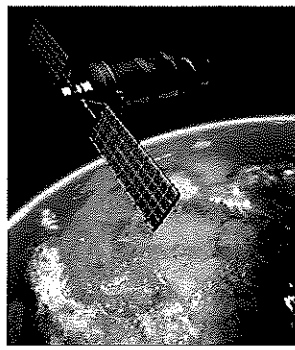


CTI Project

Xplornet Communications Inc.

Canada's Largest Rural-Focused Broadband Service – serving 900,000 Canadians:

- Founded 10+ years ago; proudly headquartered in Woodstock, NB
- 900+ employees across Canada, with offices in Markham and Cornwall, ON



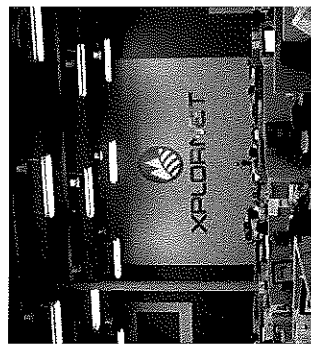
Xplornet's goal is to provide:

- Internet service that is fast, reliable and affordable
- Customer service 24 x 7 with local dealer support
- Coverage that reaches you – wherever you choose to live

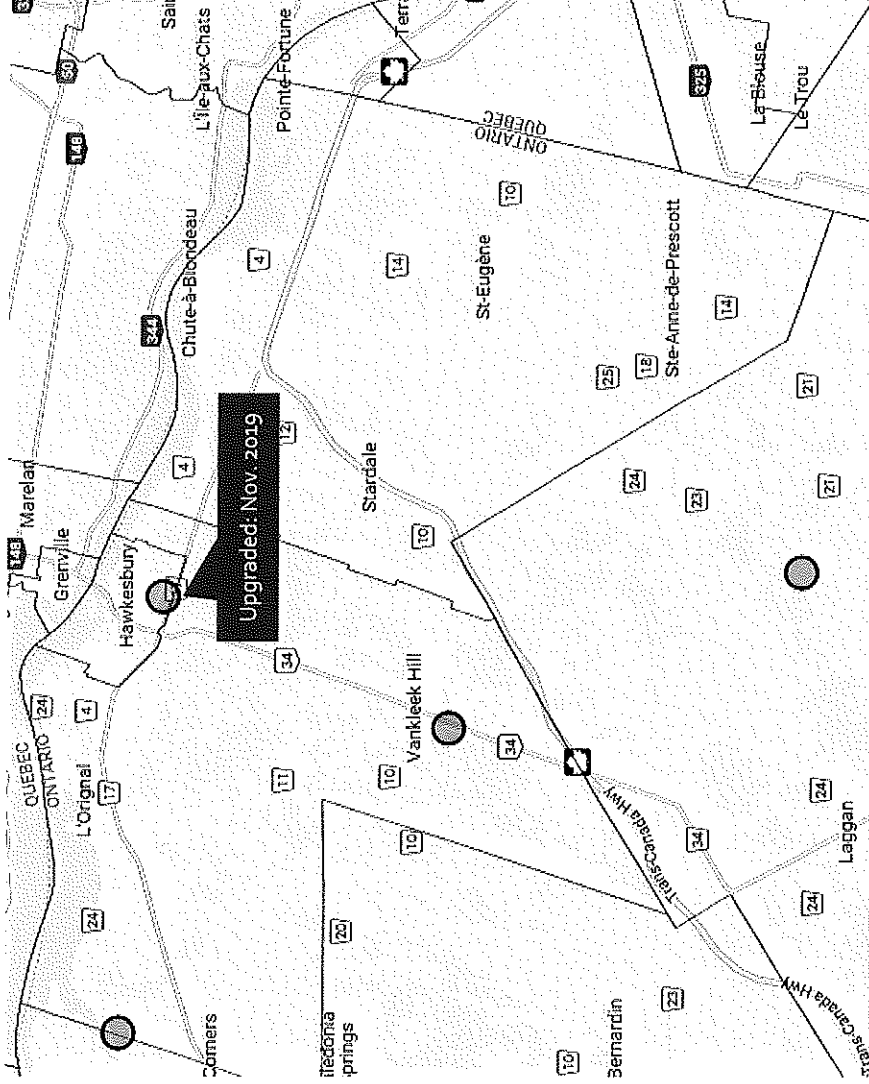


Made in Canada Story

- Built with private capital – over \$1B investment
- Over 60% of investors are Canadians
- *Focused on providing quality, high-speed internet to rural Canadians*



Network Expansion 2019: Prescott and Russell



Xplornet has been upgrading its network in Prescott and Russell throughout 2019
Unlimited data downloads now available to all customers

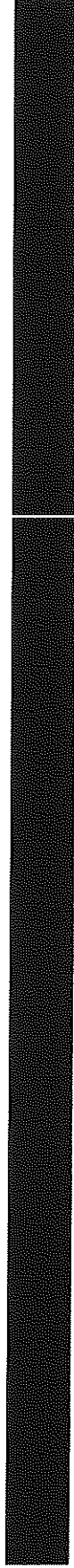


Network Overview

Our Plan

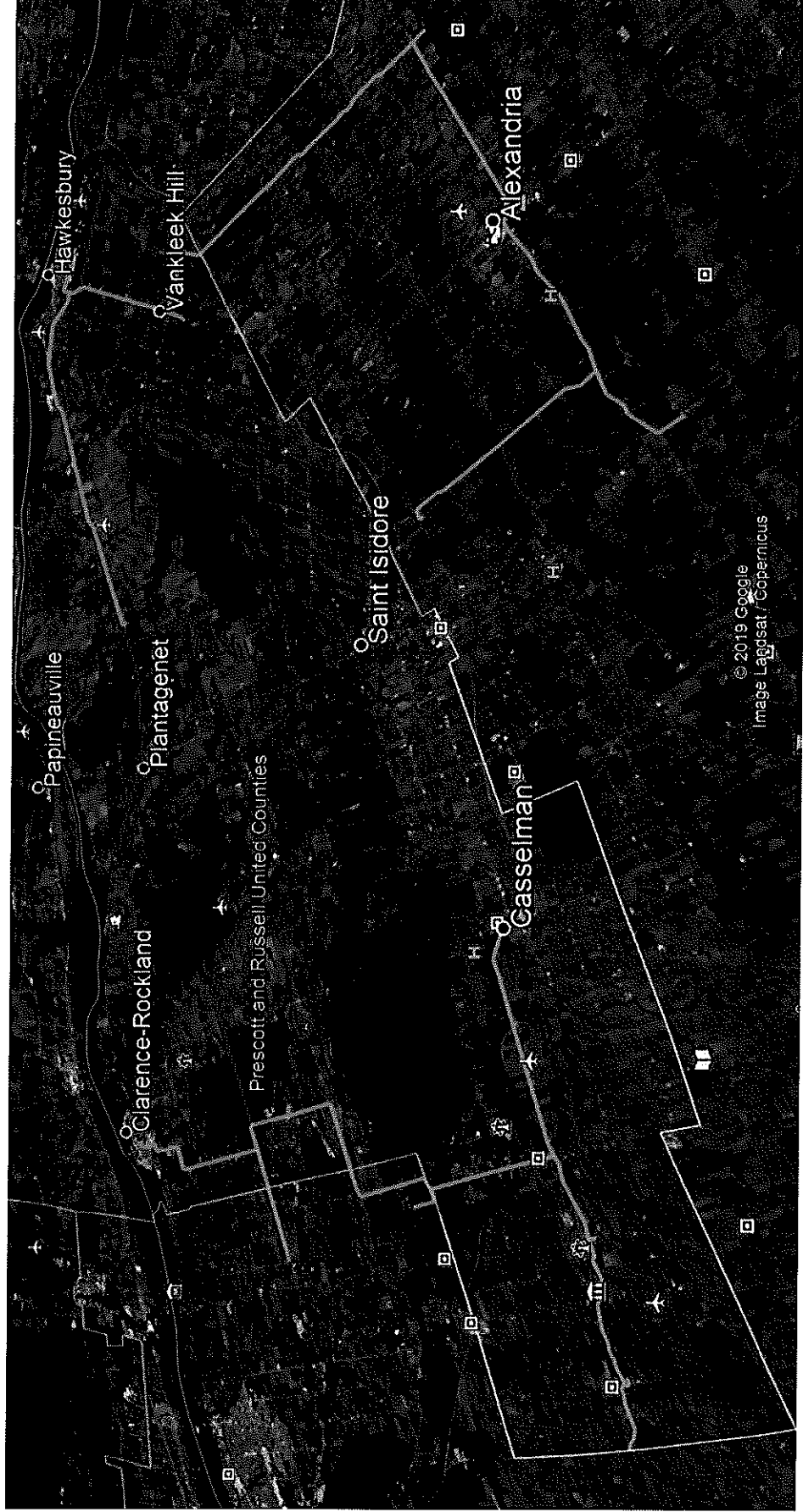
- With support from the federal Connect to Innovate program, Xplornet will construct a hybrid fibre-wireless network to deliver high-speed rural Internet service throughout the United Counties of Prescott and Russell, along with a portion of SDG.
- This project will enable Xplornet to offer download speeds of up to 100 Mbps and unlimited data to rural residents – more than 38,000 households in the project area.
- Fibre-to-the-home service will be available to 10-15% of homes in the project area.

Key Facts and Figures

	
Fibre Route	366 km
Wireless Small Cells Installed	18
Towers Upgraded and Installed	32
Homes with access to 100 Mbps download speeds	38,000
Total Xplornet Investment	\$19.07M (78%)
Total Federal Investment	\$5.51M (22%)

CTI Project

Fibre Network Route Map – Full Network



**Note: Green lines indicate segments eligible for CTI; red indicate ineligible. All segments will be constructed within the scope of the project.

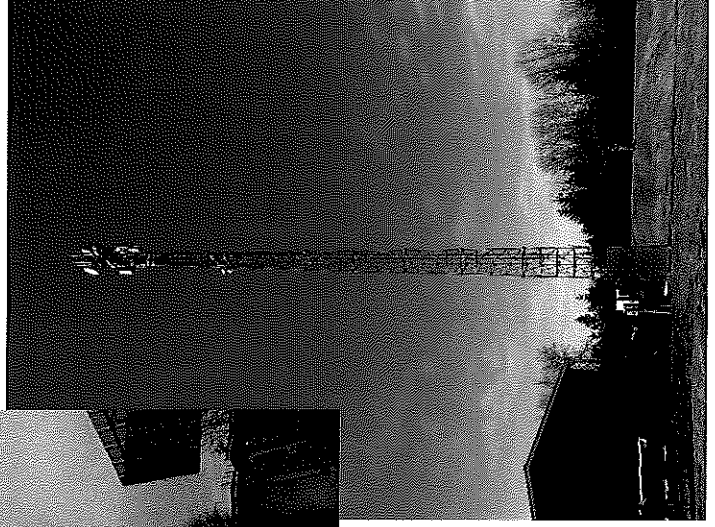
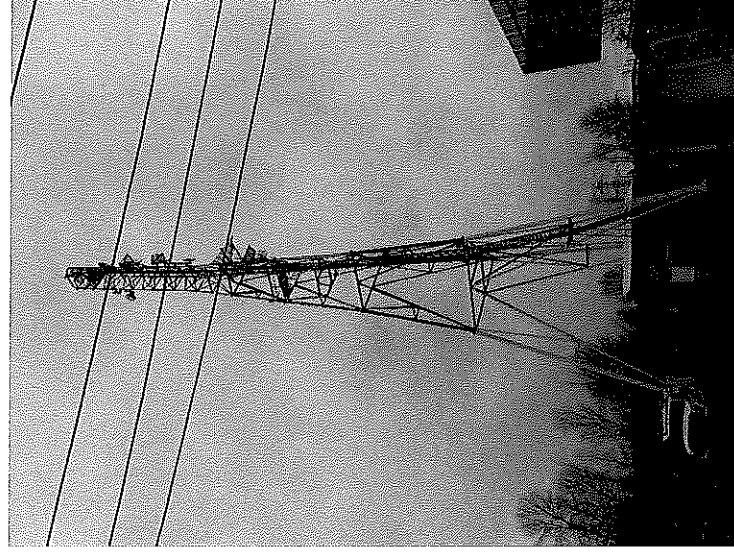
Fibre Network Route Map – East Hawkesbury



**Note: Green lines indicate segments eligible for CTI; red indicate ineligible. All segments will be constructed within the scope of the project.

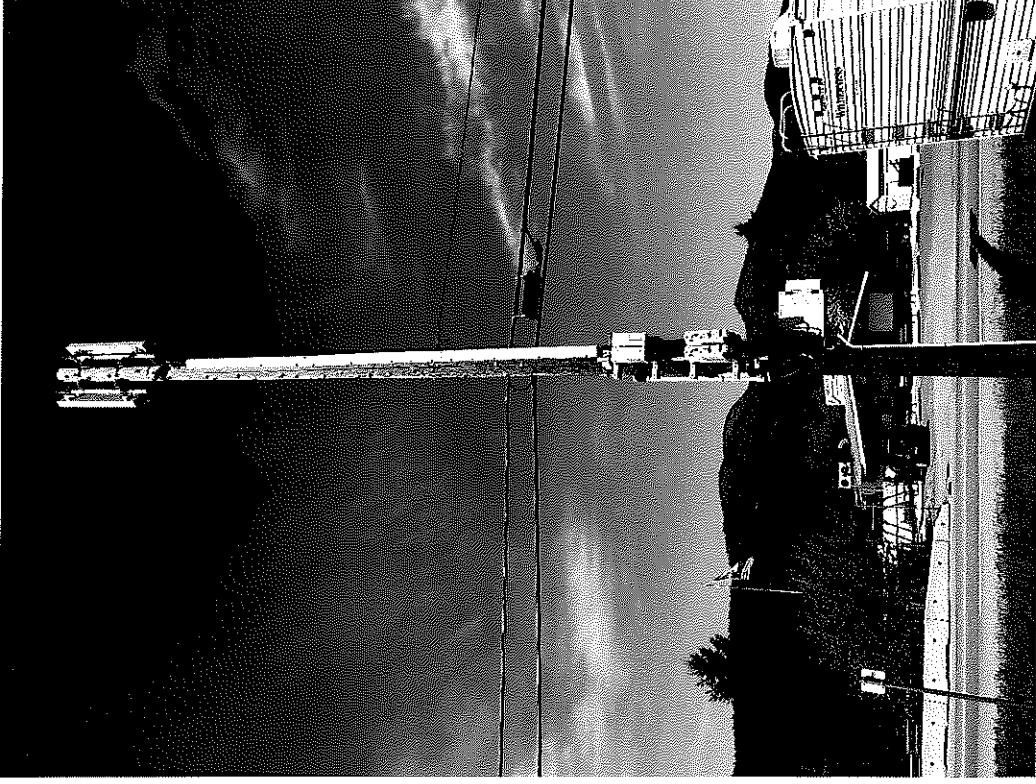


Broadcast Tower Upgrades – Scope of Work



- Upgrades to 26 existing broadcast tower sites:
 - Upgraded electronics to latest pre-5G technology
 - Tower upgrades where appropriate
 - Connection to fibre backbone
- Work carried out on private property covered by existing leases.

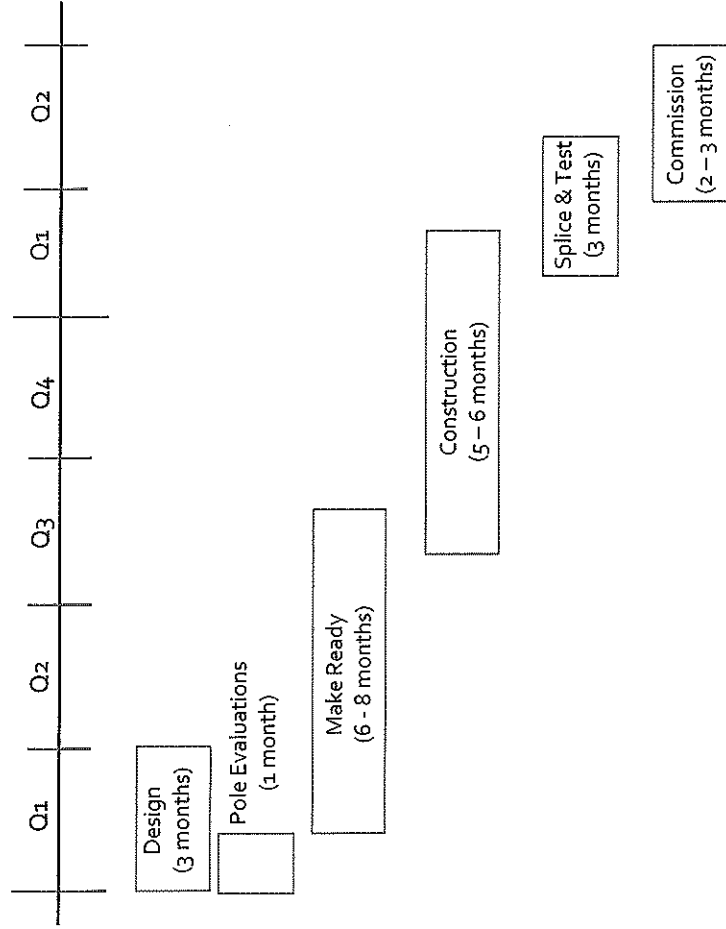
Small Cell Additions – Scope of Work



- 24 new small cells added to the network:
 - Install latest pre-5G technology
 - New utility pole installation
 - Connection to fibre backbone
- Small cells will utilize wooden utility poles either in the public right of way or immediately adjacent.

Fibre Construction Schedule

Typical Construction Phase



Construction Approach:

- Construction will be phased
 - Fibre services to LTE sites will be lit on a phase by phase basis
- 2 design and construction teams per phase
- Construction is expected to be predominately aerial
 - Civil construction will be phased for summer months
 - Aerial construction can occur year round



CTI Project

Fibre Construction Schedule

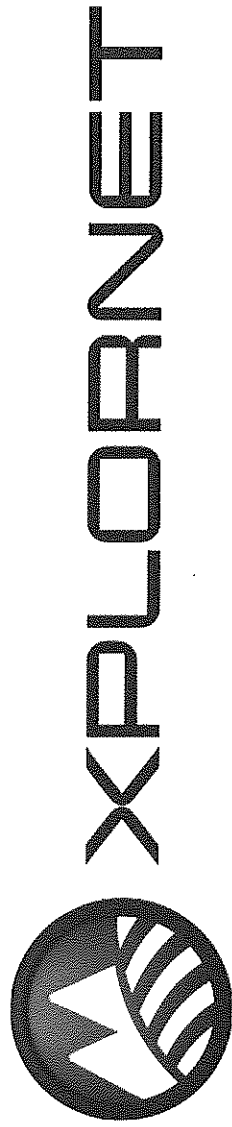
- This is an ambitious project that will bring significant improvements to rural broadband service in Northumberland County.
- To make this project a success, we need to work together!
- Xplornet is coordinating with all levels of government and private sector stakeholders:
 - Federal government (i.e. Department of Fisheries and Oceans)
 - Provincial government (i.e. Ontario Ministry of Transportation)
 - **Municipalities**
 - Railway Companies
 - Pipelines
 - Pole infrastructure owners (i.e. Hydro One, Bell Canada)

We want to work with your municipality!



Municipal Engagement

- A typical fibre project entails construction of fibre infrastructure within highways, streets, road allowances, lanes, bridges, poles, and ducts which are under the jurisdiction of the Municipality.
- Xplornet is committed to establishing a long-term partnership with Municipalities by:
 - Closely adhering to conditions of Consent to use the Right-of-Way.
 - Fully understanding our obligations under the Consent to use the Right-of-Way.
 - Using reasonable efforts to schedule and share alignments and support structure to minimize overall construction impact.
 - Use construction techniques that reduce surface impact and restoration (i.e. aerial fibre deployment, daylighting, trenchless technology)
 - Offering an acceptable warranty period after project completion.
- How can Municipalities help?
 - Sharing Municipal data to aid in design activities (i.e. block profiles, land use, civic address information).
 - Providing expeditious feedback and Municipal Consent to allow Xplornet to perform work within the Right-of-Way.
 - Applying reasonable permit application and permit change fees.
 - Defining an effective process to obtain final Municipal signoff upon project completion.
 - Defining a practical procedure around the relocation or repair of plant infrastructure after project completion.
 - Becoming an advocate for the project as Xplornet interfaces with other approval agencies.



Merci Thank You